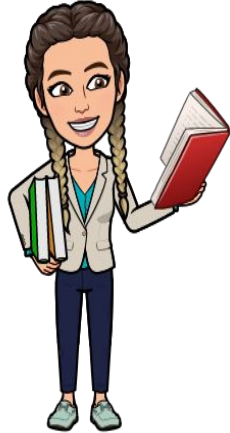


Welcome to   
 Second Grade!

# Teacher Introductions:

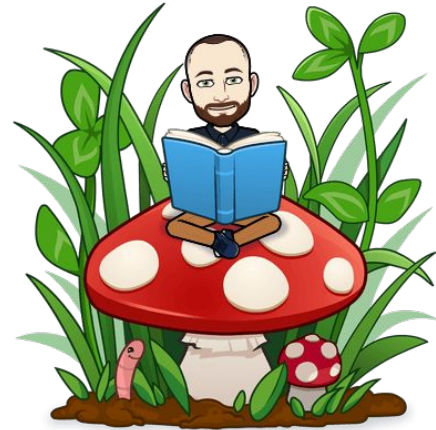
Mrs. Sanzi: 201



Ms. Arce: 202



Mr. Carnaghi: 202



# Blended Learning:

We will be using a blended learning model this school year for Groups A, B, and C.

\*\* You should have received your child's cohort from the school. \*\*

This means on some days your child will be learning in school. On other days your child will be taking part in live remote instruction at home.

If you opted your child into BLENDED LEARNING you CAN switch to remote at ANY time. (please notify the school and teacher in writing)

# Remote Learning

If you opted your child into REMOTE LEARNING you CANNOT switch to blended learning until NOVEMBER.

Group D will be the 100% Remote Learning Group and will log in to the live remote instruction at designated times.

Please refer to your schedule to see what time your child needs to log in for their lessons.

All assignments will be posted in the Google Classroom.

# Important Dates:



Wednesday, September 16th - First day of remote learning for **ALL STUDENTS**

Remote learning will continue for all students Thursday September 17th, and Friday September 18th.

On 9/16, 9/17, and 9/18 students will attend live instruction from 8:25-9:30 - We will begin promptly at 8:30 each day.

We will be going over expectations, social emotional learning, and show your child how to navigate google classroom.

Monday, September 21st - First Day of Blended Learning

# Attendance

Blended Learning Students AND Remote Learning Students:

- Attendance will be taken daily in the school building and remotely.
- Remote/Blended students will be marked present when they log in to daily live instruction. If your child does not log in for to live instruction, they will be marked absent.
- If you are experiencing technical difficulties your child will NOT be marked absent but please let us know ASAP.



# Social Distancing



- Students must have a mask on for school. If they come in without a mask or it breaks, the school will provide a mask.
- Students must come to school with a water bottle. Water fountains will be closed.
- Students will be seated and lined up 6 feet apart
- Hand sanitizer is available in the classroom.
- Sinks with soap are also available in the classroom.
- Students will be reminded of social distancing procedures throughout the day.
- Please speak to you child before school starts about the importance of correctly wearing a mask, maintaining 6 feet apart and hand washing/ sanitizing.



# Masks



shutterstock.com • 1631021197

- All students and staff **MUST** wear masks.
- Students can wear face shields + mask.
- You **CANNOT** substitute a face shield for the mask unless you provide the school with medical documentation.



# Sick



- PLEASE KEEP YOUR CHILD HOME IF THEY ARE SICK OR NOT FEELING WELL!!!
- If your child does stay home sick we encourage them to still login live so they don't miss any instruction.

# Health Screening



- Blended learning students must complete a health screening every day before they come into the school building.
- Students **WILL NOT** be permitted in the building without having a **completed** health screening. Once it's completed, it can be shown on the phone OR if you completed it on a piece of paper, you will hand that in.
- Health Screenings can be found at <https://healthscreening.schools.nyc> - paper copies will also be available at arrival doors.

# Meals for Blended Learning Students



- Breakfast will be “grab and go” in the morning and eaten in the classroom.
- Students will have instructional lunch in the classroom daily. This will be a grab and go *COLD* lunch.
- Students may bring in a snack and leave it in their lunch bag for snack time in the afternoon.
- **THERE IS ABSOLUTELY NO SHARING OF ANY FOOD, DRINKS OR SNACKS.**

# Teacher Communication

- We will use Class Dojo. The link to join will be posted on the google classroom stream. It is imperative you have a class dojo account. This is how we will be communicating important messages to you.
- Please also take note of our email addresses:
- Mrs. Sanzi: 201 - [jsanzi@schools.nyc.gov](mailto:jsanzi@schools.nyc.gov)
- Ms. Arce: 202 - [carce@schools.nyc.gov](mailto:carce@schools.nyc.gov)
- Mr. Carnaghi: 202 - [mcarnaghi@schools.nyc.gov](mailto:mcarnaghi@schools.nyc.gov)



# Arrival

- Doors will open at 8:25. - EXIT 8
- Random temperature checks will be done at door.
- Child cannot enter the building without the health check.
- Please make sure your child is arriving to school each day on time.
- Instruction begins at 8:30.

# Dismissal

Dismissal will be staggered to make sure everyone is socially distant and safe.

1:40 - 3rd, 4th, and 5th grade

1:50 - K, 1st and 2nd

**EXIT 8 - Second grade**



Please make sure you are picking up your child on time.

# Submission of Assignments

- Assignments should be handed in by the due date listed in the assignment.
- Please contact your teacher immediately if you are experiencing technical issues preventing you from submitting remote assignments.
- All work **MUST BE AUTHENTIC STUDENT WORK.**



# Google Classroom



All remote work will be assigned on google classroom.

Please make sure you are logging in **BEFORE SEPTEMBER 16th!**

Classroom.google.com - login using your child's **doe email address.**

If you need your child's email address please reach out to Mr. David Sampong **BEFORE SEPTEMBER 16TH.**



# Login Information

We will be using many different websites and platforms this year.

It is **your responsibility** to keep track of your child's login information!

We recommend writing each username and password down on the first page of your child's home notebook.



# Office Hours

- Teachers will have office hours from 2:00-2:20 pm.
- During this time you can contact your child's teacher.
- Office hours are [by appointment only.](#)

# School Supplies

- The Supply List is posted on the school website.  
<https://www.thesteambridgeschool.org/> - click on supply list, second grade.
- If your child is taking part in **BLENDED LEARNING**, they need **BOTH** supplies for in school and home!
- Supplies are **NOT** allowed to be shared!!

# Remote Learning Expectations

- Be on time and prepared with your notebook and a pencil.
- Sit in a quiet place free of distractions.
- Mute microphone and turn camera on.
- Listen when teacher and others are talking.
- Be respectful.
- Should be dressed for school.



# Schedule

Students who are in school will be following the in school schedule for their classroom.

Those who are remote will be following the remote schedule, in which they will be required to log in during specific times to receive their live instruction daily.

# Schedule Continued

- **Remote Check In:** This will vary - can be used for teachers to provide feedback on work or small group instruction.
- IF small group instruction is taking place - you will be notified. Your child will be required to log in.
- On B/C Days - Mr. Carnaghi will be conducting remote check in for BOTH 201/202 in the morning and afternoon.
- Afternoon Remote Check In will NOT take place on **Group A Days**.

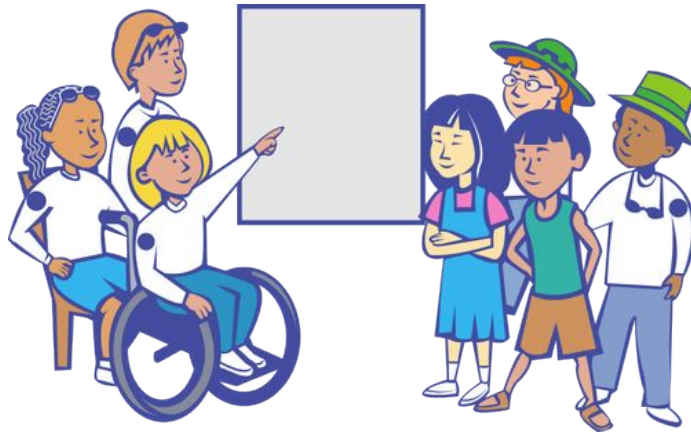
# Gym

- Assignments will be posted on **Mondays** and **DUE** every **Friday**.



# Social and Emotional Learning

- Blended Learning Students will have opportunities for Social Emotional learning experiences every afternoon with their classroom teacher(s)





# Student Emails and My Schools Account

- Go to school website - <https://www.thesteambridgeschool.org/>
- Click on NYCDOE Email at the top
- Enter your child's 9 digit student id number - this can be found on old report card.
- From there you will see your child's email and login and can create a password.





# Meals

- NYC DOE is providing families with breakfast and lunch for those that need it.
- 9/11, 9/14, and 9/15 meals can be picked up at **PS498** between 9am and 12pm.
- Starting on Thursday 9/16, **students** who are not in the building and need breakfast and/or lunch can pick up at **PS481** between 9am and 12pm.
- Starting on Thursday, 9/16, **adults** who need breakfast and/or lunch can pick up at **PS127** or **PS106** between 3pm and 5pm.



# TACKLING

student emails, remote devices

# TECH

[www.thesteambridgeschool.org](http://www.thesteambridgeschool.org)  
For more information, please contact us at (903) 884-5671

## SESSION TIMES

ENGLISH: 9 : 00 AM - 9:55 AM  
SPANISH: 10 : 00AM - 10: 55AM  
ARABIC: 11 : 00 AM - 11: 55AM

## ZOOM MEETING ID

949 9870 7807

PASSWORD: 549921

SEPTEMBER

15

2020

# Questions?



©Prawny \* illustrationsOf.com/216173